

PETROF

“A name that demands commitment”

The PETROF company is a traditional maker of upright and grand pianos, and currently the biggest in Europe. The company was founded by my great-great-grandfather Antonín Petrof back in 1864. It is a great honour to continue the family tradition of building PETROF pianos at the same address, but also a great commitment. For this reason we never lose sight of what gives our instruments their worldwide reputation: their outstanding craftsmanship and their romantic, rounded tone. This is only achieved by using the highest quality European materials, and by carrying out a large proportion of the work by hand. Our experienced workforce, with its expertise, makes its own contribution to making PETROF the leading innovator in the piano making industry. I believe in preserving the tradition of our acoustic instruments, ones into which everyone can place a part of himself. In this way their sound will continue to stir the hearts of music lovers the world over.

Let me guide you through the PETROF pianos catalogue.



Zuzana Ceralová Petrofová
President of PETROF Group



PETROF GRAND PIANOS

**“Every instrument makes
a statement”**

Our pianos undergo a long production process and specialists of the highest calibre work on their completion. We realise that every instrument that leaves our factory gates makes a statement about everyone involved in its construction, as well as the good name of the PETROF family. It is not just in their construction that the greatest care is taken, however. PETROF pianos are acclaimed for their romantic, rounded and unusually rich tone, thanks to the work of our experienced piano building, tuning and intonation team.



** For a display of available finishes see page 19.*

P 284 Mistral



“Perfection
without
compromise”

This piano is a masterpiece and is the company flagship. It is always a great honour for me to hear it in the biggest concert halls. The Mistral is prized above all for its tremendous bass and resonant treble. Artists often find in it a trusted companion when performing the most challenging compositions of our musical heritage. It is the biggest PETROF grand piano.

weight 576 kg | length 2840 mm | width 1580 mm | height 1025 mm
displayed finish: black, high polish 0801

P 237 Monsoon



“A professionals’ dream comes true”

Its refined and balanced sound is popular for concert use or for professional recording purposes. The faultless action, with its outstanding dynamics and immediate response, allows the artist unlimited scope for expressing his feelings. This is an instrument made by the best and most experienced craftsmen in our trade. Pianists will appreciate it for its optimal ratio between size and performance.

weight 521 kg | length 2370 mm | width 1565 mm | height 1025 mm
displayed finish: black, high polish 0801

P 210 Pasat



“Pride in every note”

PETROF's best selling grand piano, an instrument that will never be out of place in any situation. It is a masterly built instrument, while at the same time its size also allows it to shine even in confined spaces. Even here, it can recreate the atmosphere of the world's most famous concert halls. The list of its accomplishments fills me with parental pride.

weight 433 kg | length 2100 mm | width 1550 mm | height 1025 mm
displayed finish: black, high polish 0801

P 194 Storm



“Arouses a storm of emotions”

The Storm lives up to its name, being able to arouse a storm of emotions within the pianist and his audience. Its versatility builds bridges across musical genres. You will have remarkable experiences with it that cannot be expressed in words. The uniqueness of the moment strikes you as soon as the sound from this instrument reaches your ears. The Storm is the longest piano in our standard series.

weight 365 kg | length 1940 mm | width 1525 mm | height 1025 mm
displayed finish: black, high polish 0801

www.petrof.com

P 173 Breeze



“Romantic spirit”

The Breeze has a way of caressing gently and romantically. If you let it, it will reach into the innermost recesses of your soul. Its touch is effortless, making it all the more inspiring and personal. With its kind assistance you will dare to venture where previously you might have been afraid even to look. Its perfect proportions also make it an enhancement to any stylish interior.

weight 320 kg | length 1730 mm | width 1525 mm | height 1025 mm
displayed finish: black, high polish 0801

P 159 Bora



“The big little grand”

Its dimensions are the only thing that makes this a small instrument. As soon as the hammers hit the strings, you will discover its wonderful, rich and surprisingly powerful sound. This is because the very best materials, technology and design features of concert pianos go into its construction. Its potential greatly transcends its actual size.

weight 309 kg | length 1590 mm | width 1525 mm | height 1025 mm
displayed finish: black, high polish 0801

Style Collection

P 173

Breeze Rococo



P 173

Breeze Chippendale



P 173

Breeze Demichippendale



“Every instrument an original”

The grand pianos in our Style Collection take their inspiration from the artistic style of the Rococo and the Classical period. Their beauty stems above all from the originality of every instrument we make, and the precision of their construction, which embodies the first-class skill of our craftsmen. This alone has made this series an inseparable part of our production. We also make pianos that are absolutely unique, producing them for special occasions or to meet our customers' requirements. You will find these models in our PETROF Special Collection catalogue or on our web pages.

PETROF UPRIGHT PIANOS

“We never stop developing”

The quality of the upright pianos we make at PETROF reflects our desire to prove that even an upright can gratify a discerning player. PETROF has always been an innovator. Our Development Department, where our technical staff work on perfecting every detail of the instruments, was set up back in 1954. A wide choice of heights, models and finishes also meets the requirements of a very diverse array of customers. What particularly impresses them is how easily one adapts to our pianos, and how versatile they are, with their surprisingly powerful and romantic tone. I am delighted by their growing popularity.



** For a display of available finishes see page 19.*

P 135 K1



“A unique inheritance from our predecessors”

The tallest PETROF upright. It has the greatest sound potential, making it suitable for discerning pianists and audiences. It is a masterfully built instrument using the expertise and skill of our predecessors. The original design of the music stand merely enhances its uniqueness, but this really lies in its powerful, open and colourful tone.

weight 256 kg | width 1448 mm | depth 606 mm | height 1350 mm
displayed finish: black, high polish 0801

P 131 M1



“Meticulous
design, open
heart”

Due to its tremendous, colourful sound this model is classified as a concert instrument. It sets no limits on the pianistic art, creating sufficient scope for its self-fulfilment.

weight 253 kg | width 1455 mm | depth 600 mm | height 1310 mm
displayed finish: white, high polish 0001

P 125 G1



“A time-honoured inspiration”

The models of this height category are among our customers' most favourite because of their optimal ratio between height and performance. They offer dynamic diversity and excellent sound. I dare to say that every pianist will, in this height category, find a design that will appeal to them.

weight 236 kg | width 1463 mm | depth 590 mm | height 1250 mm
displayed finish: mahogany, high polish 3281

P 125 F1



weight 236 kg | width 1463 mm | depth 590 mm | height 1250 mm
displayed finish: cherry, satin 6217

P 125 K1



weight 242 kg | width 1462 mm | depth 588 mm | height 1250 mm
displayed finish: black, high polish 0801

P 125 M1



weight 236 kg | width 1456 mm | depth 587 mm | height 1250 mm
displayed finish: walnut, high polish 2251

P 122 N2



weight 233 kg | width 1456 mm | depth 562 mm | height 1220 mm
displayed finish: white, high polish 0001

P 118 P1



“It will awaken your talent”

Our lowest upright models are produced with a view to preserving all the qualities that make PETROF uprights so popular. They are remarkable for their clean, elegant design, making use of simple shapes. Their size in no way limits their acoustic power, and they offer everyone who sits down to play them the chance to develop their talent. They will prove a helpful companion along the difficult path of musical education.

weight 212 kg | width 1445 mm | depth 550 mm | height 1180 mm
displayed finish: cherry, satin 6217

P 118 M1



weight 212 kg | width 1445 mm | depth 541 mm | height 1180 mm
displayed finish: walnut, high polish 2251

P 118 S1



weight 212 kg | width 1443 mm | depth 545 mm | height 1180 mm
displayed finish: black, high polish 0801

Style Collection

P 118 R1

Rococo



P 118 C1

Chippendale



P 118 D1

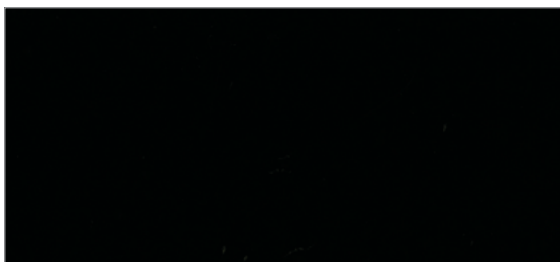
Demichippendale



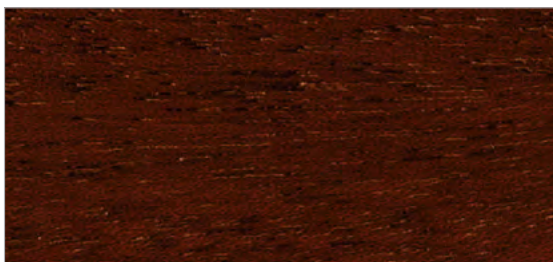
“Every instrument an original”

The upright models in the Style Collection are based on successful grand pianos from the same series. The high proportion of work carried out by hand makes each one an original, embodying part of the craftsman’s personality. In recent years absolutely unique uprights have been brought out, which you will find in our PETROF Special Collection catalogue as well as on our web pages. We do not stop there, however: our craftsmen are happy, on request, to follow the particular wishes of our customers and build an instrument according to their personal requirements.

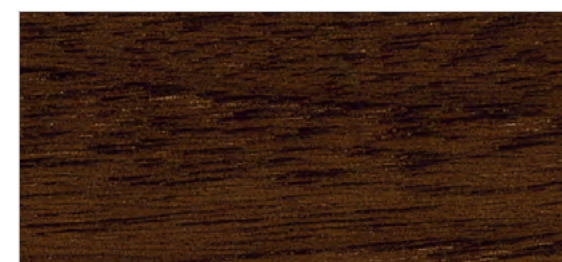
Finishes



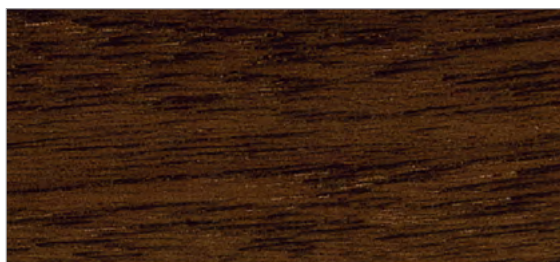
0801
Black, high polish



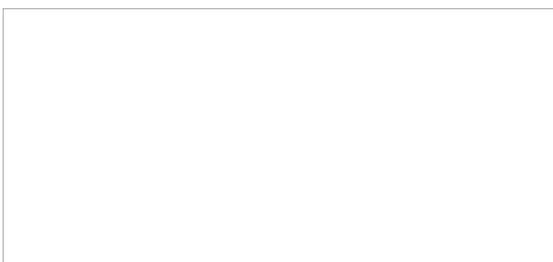
3281
Mahogany, high polish



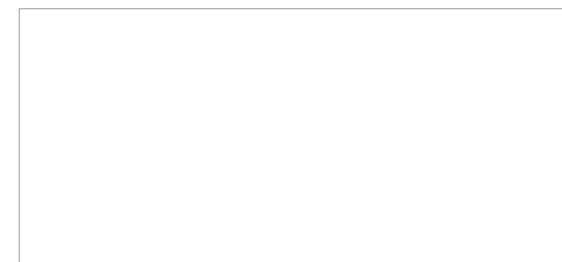
2251
Walnut, high polish



2357
Walnut, satin



0001
White, high polish



**Other finishes
per order**



The regulation of the piano action is carried out in the PETROF factory by the most experienced employees, who have many years of practice behind them. This guarantees that the action is perfectly balanced across the entire keyboard, enabling precise interaction between the player and the instrument.



The piano framework is one of the most important components. Together with the iron frame it helps to resist the tension exerted by the strings, which in an upright reaches up to 18 tonnes. For the construction of the piano framework we use the best quality materials, sourced mainly in the Czech Republic.



Shaping of the bridges, known as "notching", is carried out with maximum precision by our skilful workers with the use of chisels. Notches with piano bridge pins, together with agraffes, determine a very important parameter, the string scale. For this reason, great care is taken in shaping the bridges.



In order to achieve maximum precision, over 500 functional openings in the iron frame are drilled using a computer-controlled machine. Once it is ready, the iron frame is then polished and varnished in our factory achieving its final shape.



Voicing is carried out so as to ensure that every key obtains the required mechanical properties. This creates an open, colourful tone, romantic in character, which is a typical feature of PETROF instruments.



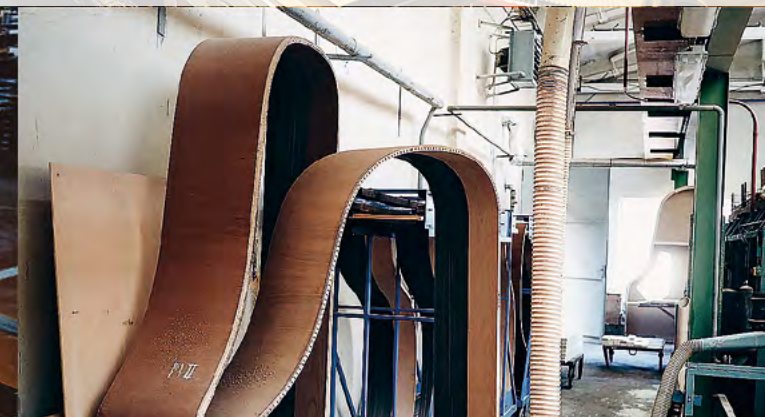
The bonding of the piano cabinet to the acoustic element, which consists of the piano framework with the iron frame and the strings. The quality of the bonding significantly affects the final appearance of the whole instrument.



The stringing is one of the most exacting operations. The drawing of the strings onto the piano frame is partly carried out using a machine that ensures the correct height of the tuning pins and the required number of turns for the strings.



The iron frame and the wooden framework are combined by being screwed together. The iron frame must be attached to the framework very firmly, as the tension in the strings, which this construction has to bear, can in a grand piano reach over 20 tonnes.



The outer rim of the piano is attached directly to the framework. This gives the piano its typical appearance and adds to the extreme rigidity of the whole construction.

Certification of EUROPEAN EXCELLENCE

We pride ourselves on using the very best materials to build our pianos. In 2007 PETROF was awarded an EEX certificate, which ever since has appeared as a seal on all our instruments. It confirms their European origin and the highest quality of construction materials.



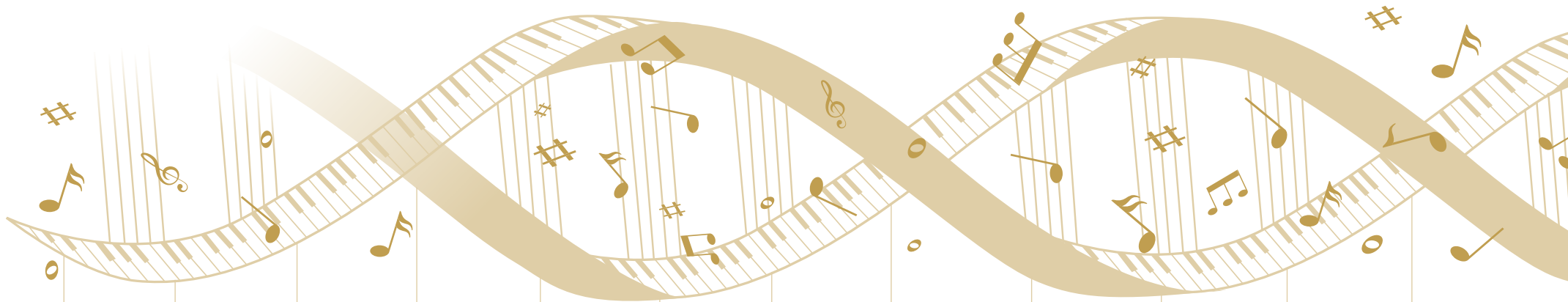
ISO Certification

PETROF Company Ltd. has established and certified an integrated system of quality and environment management. Compliance with the requirements of the relevant standards of ISO 9001:2016 and ISO 14001:2016 is evidenced by valid certificates issued by the certifying body TUV CZ.

ISO **9001:2016** sets out the requirements for a quality management system for maintaining a constantly high standard of production, thereby providing customers with consistently high quality services and products.

ISO **14001:2016** sets out the requirements for a system of care for the environment. Environmental management reduces the impact on the environment of the organisation's activities, thereby leading to their improvement.





1839

Birth of the company founder, Antonín Petrof

1874

New factory; production of harmoniums

1895

Export of instruments; service centre and warehouse in Vienna

1915

After deaths of Antonín Petrof and his wife Marie the company passes to the youngest son Vladimír

1934

Grand Prix gold medal in Brussels

1954

Founding of Development Department

1864

Construction of first PETROF grand piano; founding of company

1883

Start of upright piano production

1899

Antonín Petrof appointed court piano maker for Austria-Hungary

1928

3rd PETROF generation managing the company; together with STEINWAY, PETROF opens office in London

1948

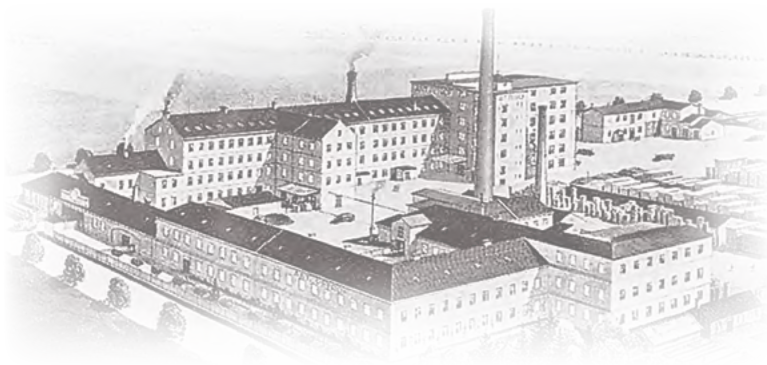
Nationalisation of company

1958

EXPO Brusel gold medal (PETROF Mondial)



Antonín Petrof



PETROF company in Hradec Králové



2nd generation Jan, Antonín, Vladimír



3rd generation Dimitrij, Eduard, Eugen



1991
4th PETROF
generation managing
the firm under
Jan Petrof

2003
Patenting
of Magnetically
Accelerated Action
(MAA)

2005
Certificate
of European
Excellence (EEX)

2013
Opening
of the PETROF
Museum

2015
Zuzana Ceralová
Petrofová is named
MANAGER
OF THE YEAR

2017
Opening
of the new cultural
and business centre
PETROF Gallery

2001
5th generation
managing the firm;
factory returns to
hands of Petrof
family

2004
Zuzana Ceralová
Petrofová becomes
company president;
company celebrates
140th anniversary

2008
New generation
of grand pianos

2014
Launch of new
premium brand
ANT. PETROF;
company celebrates
150th anniversary

2016
PETROF
Art Family project
(PAF)

2019
Company
celebrates
155th anniversary



Medals of PETROF company



4th generation Ing. Jan Petrof



European Excellence
Certificate



New generation of grand pianos



5th generation
Mgr. Zuzana Ceralová Petrofová



Cultural and business
centre PETROF Gallery



© 03/2019, PETROF, spol. s r.o.



www.petrof.com



PETROF[®]
PIANOS SINCE 1864